

# In This Together.

Dundee Museum of Transport is committed to ensuring the safety and well-being of all our visitors, staff and volunteers. We have created an enhanced cleaning regime and provided PPE for our staff to keep everyone safe.

## Contactless Payment.

Payment by debit or credit card is preferred. We can accept cash if you are unable to pay by credit or debit card.



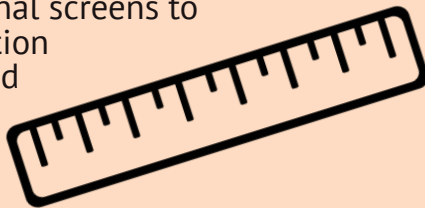
## One-Way System.

A one way system has been introduced. Please follow the signs and arrows. If you leave the walkways please maintain 2m social distancing. A map of the one-way system is provided on the back of this document.



## 2 Metres Distance.

The ticketing point has been moved further into the museum with 2m distanced queuing. Additional screens to maintain separation between staff and visitors have been installed.



## Look, Don't Touch.

Please look but don't touch the exhibits in order to minimize the spread of germs.



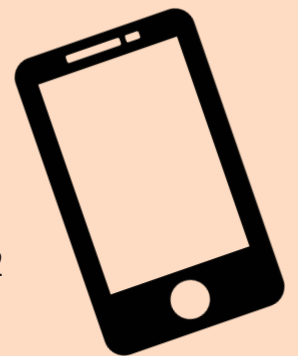
## Maximum Visitors.

We are limiting the number of visitors allowed in the museum at any one time.



## Call with questions.

There are fewer staff on duty to minimise contact. If you have any queries or concerns during your visit please ring reception on 01382 455196.



## Hand Sanitizer.

Antibacterial Hand Wash and Hand Sanitizer is provided to all visitors and gloves are available on request.



## Cafe closed.

Our cafe will remain closed currently. The shop has a limited range of goods for sale.



**Thank you.**

